

FROM THE PUBLISHERS OF (201) MAGAZINE

(201) HOME

PART OF THE USA TODAY NETWORK

northjersey.com

FALL 2020

KEEP IT CLEAN

A QUIET CLOSTER DESIGN SPEAKS VOLUMES

PLUS
GREAT OFFICES FOR
WORKING FROM
HOME IN STYLE

**EDGEWATER
COLONY IS
A HISTORIC
HIDEAWAY**

**DESIGNING
FURNITURE
THAT LASTS**

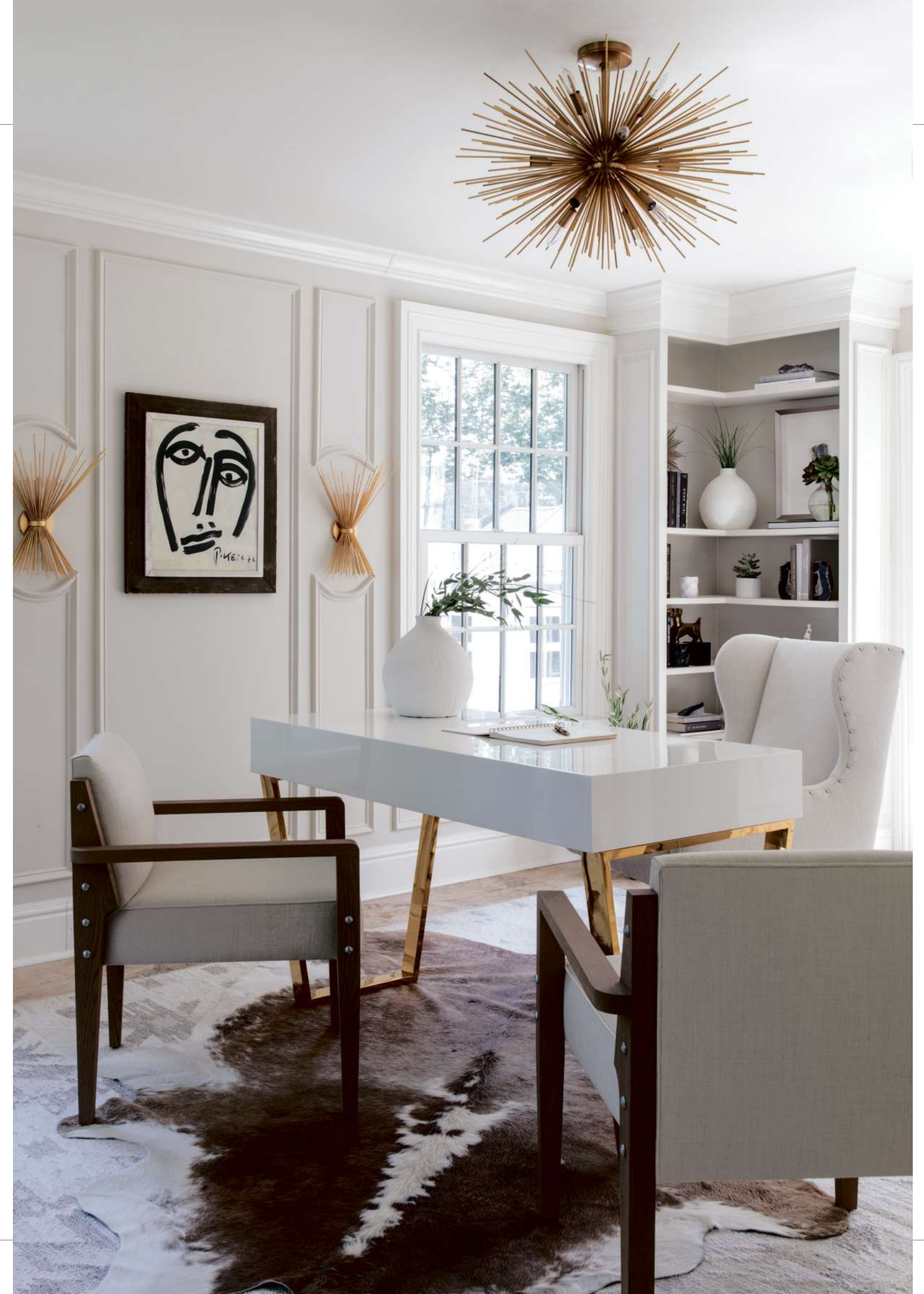


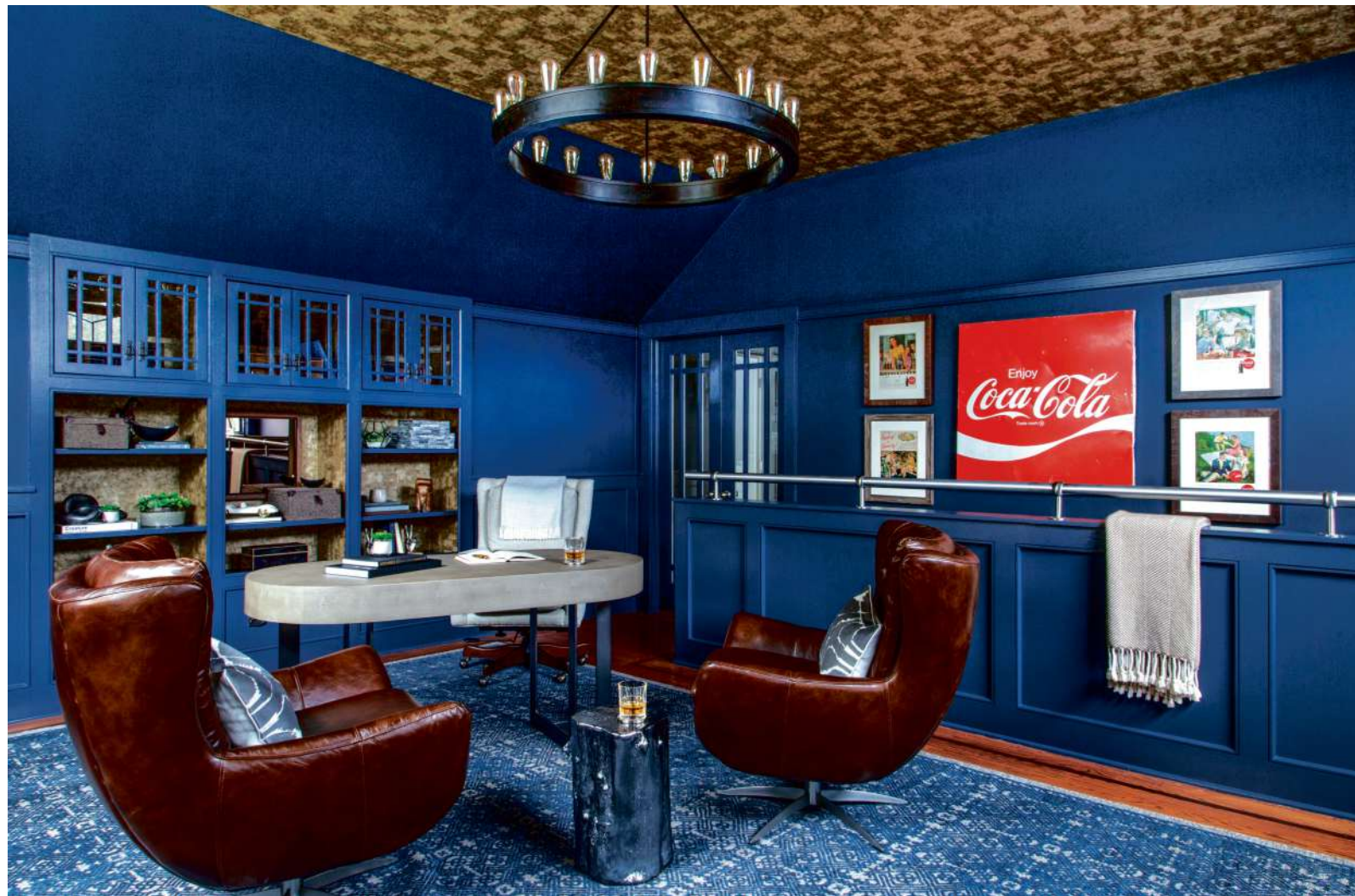
WHAT A DESIGNER WANTS

DESIGNED BY: **JULIE KANTROWITZ,**
JK INTERIOR LIVING
LOCATION: **RIDGEWOOD**

Kantrowitz designed this home office for herself. She focused on attractive features such as open corner shelving, a silk wall covering backsplash by Phillip Jeffries on the bookcases, and a window seat coveted by her family. Overhead wall sconces by Aerin for Visual Comfort create a nook-like setting. The cabinet stores work-related items and materials used in the nearby patio. Kantrowitz broke up the tall unit with a stained white oak slab, and adorned the panels with a decorative wall covering by Harlequin. Her brass and lacquer desk is by Worlds Away, and the ceiling fixture is by Arteriors. The sconces flanking her artwork are by Kelly Wearstler for Visual Comfort. Her design also includes her signature trim that is customized to the lighting and hardware, and hugs the office's corners and curves. >

COURTESY OF RAQUEL LANGWORTHY PHOTOGRAPHY





THINGS GO BETTER WITH COKE

DESIGNED BY: **JULIE KANTROWITZ, JK INTERIOR LIVING**
 LOCATION: **RIDGEWOOD**

The owner of this home office is a gentleman who inherited a beverage distribution company from his father, a man who began his career as a Coca-Cola truck driver. Each piece of artwork has sentimental value, including the oversized vintage Coca-Cola metal sign, custom framed vintage Coca-Cola and Sprite advertisements from original *Time* magazines circa the 1950's, and vintage framed match boxes, Crush soda jerk hat and Schweppes scale. "When approaching the design aspect of this room, I was aiming to achieve a sophisticated, cozy and masculine den," says Kantrowitz. "By harnessing what I believed were the textures and colors of this mood, I decided to wallpaper the ceiling and shelving backplash with a faux animal hide by Zoffany, juxtaposed against dark navy blue walls." The Bernhardt desk looks stately beneath the Ralph Lauren chandelier and atop a custom handmade navy blue and taupe wool rug. >

COURTESY OF RAQUEL LANGWORTHY PHOTOGRAPHY



home offices



A DAUGHTER'S WORKSPACE

DESIGNED BY: **JULIE KANTROWITZ, JK INTERIOR LIVING**
LOCATION: **RIDGEWOOD**

This bedroom-study area redesign was a birthday present for Kantrowitz's 10-year-old daughter, who was transitioning to a pre-teen room. Kantrowitz customized a pale shade that doesn't distract from the room's main attraction: its custom ceiling mural bearing a bold pop of "feminine colors" in an abstract floral design. The custom desk has seven drawers of different sizes; the gold mesh gives the cabinetry a slightly edgier look. The sconce is from Urban Electric; the desk chair is from Ballard Designs. And for a unique touch of fun, the custom-made hammock chair is made of comfortable fabric and an organic-style wooden rod to complement the floral ceiling detail.

LOADS OF NATURAL LIGHT

DESIGNED BY: **MICHAEL AND MARY SCRO, Z + ARCHITECTS**
LOCATION: **ALLENDALE**

The owner of this light and airy workspace wanted a Napa Valley-inspired, transitional cottage aesthetic, with natural materials and grouped windows. The design takes advantage of great natural light and is reinforced by clean, minimal lines. Punches of color, combined with a glass desk that visually seems to melt away, brings in the view from outside, while a few strong furniture pieces take center stage. File storage and other office needs are hidden behind built-ins on interior walls. ■



COURTESY OF RAQUEL LANGWORTHY

COURTESY OF AMANDA WILKINSON PHOTOGRAPHY